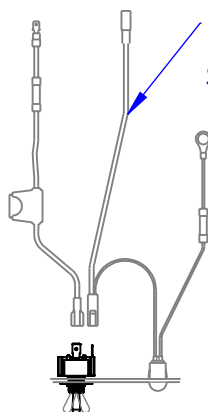


ITEM NO.	PART NUMBER	DESCRIPTION	QTY.
1	AD-6400 10-12	ADAPTER 10MJ x 12MB	1
2	HA-16-16MB	HOSE INSERT 4604-16-16MB	1
3	PU-MANO6D	6 GROOVE CLUTCH	1
4	PU-P16 65C 9D6	2-BOLT A PUMP	1
5	EL-SK-100	PUMP SWITCH KIT	1



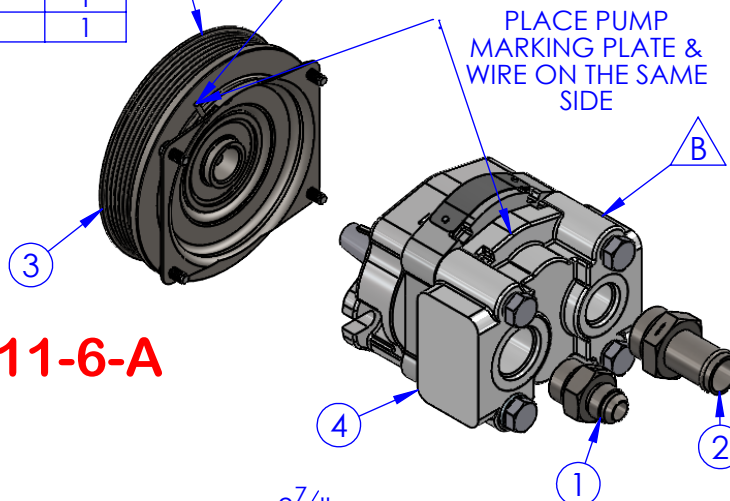
**EL-SK-100: QTY 1**  
"SWITCH KIT, DASH"  
SEE DWG 10-0906 FOR  
MORE DETAILS

**PU-RP6-11-6-A**

CLUTCH MOUNTED SEPERATELY

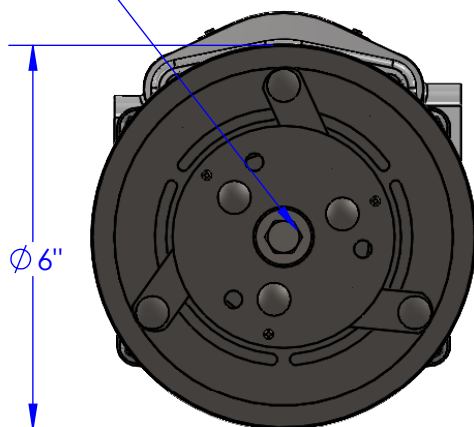
BLACK WIRE

PLACE PUMP  
MARKING PLATE &  
WIRE ON THE SAME  
SIDE

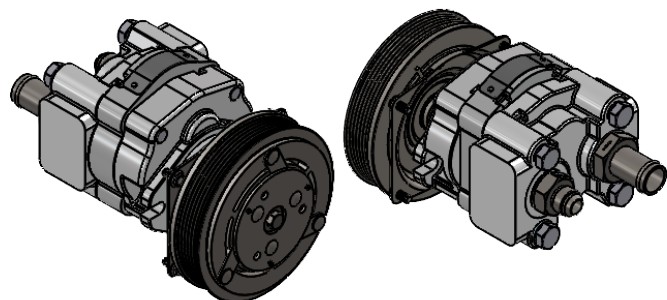
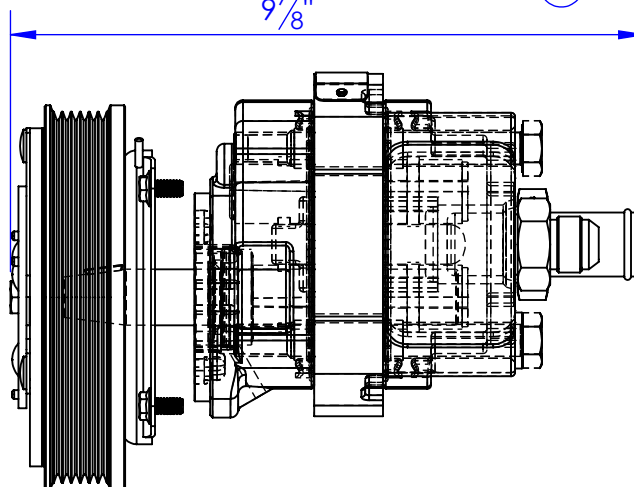


9<sup>7</sup>/<sub>8</sub>"

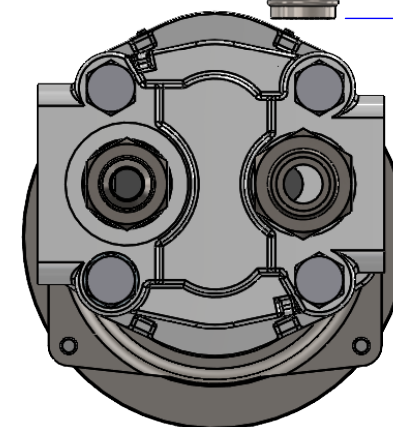
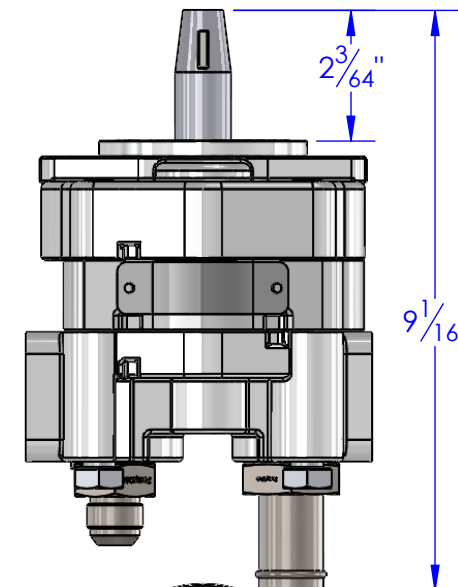
Recommended torque, about 20ftlbs



Ø 6"



REV.	DESCRIPTION	DATE	APPROVED
A	INITIAL RELEASE	10/25/2013	
B	REPLACED PU-P16 45C 9D6 WITH PU-P16 65C 9D6	6/11/2014	
C	ADDED ITEM NO.5	11/7/2023	KD (BB)



P.O. BOX 248,  
SABETHA, KS 66534



DIMENSIONS ARE IN INCHES  
TOLERANCES:  
FRACTIONAL  $\pm 1/16$   
ANGULAR: MACH  $\pm 1$  BEND  $\pm$   
TWO PLACE DECIMAL  $\pm 010$   
THREE PLACE DECIMAL  $\pm 005$

MATERIAL ---

DO NOT SCALE DRAWING

NAME	DATE
DRAWN <b>HEATH</b>	11/7/2023
PART # <b>PU-RP6-11-6-A</b>	
ASM #	

COMMENTS:

6 GROOVE A MOUNT  
REAR PORT PARKER  
PUMP STRAIGHT

SIZE <b>A</b>	DWG. NO. <b>10-0931-20 C</b>	REV. <b>C</b>
SCALE: 1:3	WEIGHT: ---	SHEET 1 OF 1

**PROPRIETARY AND CONFIDENTIAL**  
THE INFORMATION CONTAINED IN THIS  
DRAWING IS THE SOLE PROPERTY OF TRIPLE  
C INC. ANY REPRODUCTION IN PART OR  
AS A WHOLE WITHOUT THE WRITTEN  
PERMISSION OF TRIPLE C INC. IS PROHIBITED.